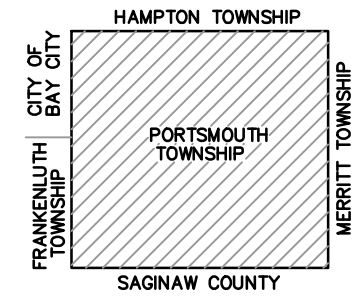


LOCATION MAP



LEGEND

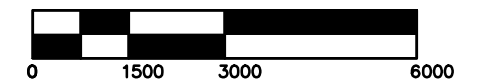
- ADJACENT COUNTY
- CITY, VILLAGE OR PRIVATE STREET
- URBAN LIMITS
- COUNTY PRIMARY ROADS
- COUNTY LOCAL ROADS
- STATE TRUNK LINE
- RAILROADS
- CITY OR VILLAGE LIMITS
- SECTION LINES

PRIMARY ROAD SYSTEM 18.03 MILES

LOCAL ROAD SYSTEM 29.64 MILES

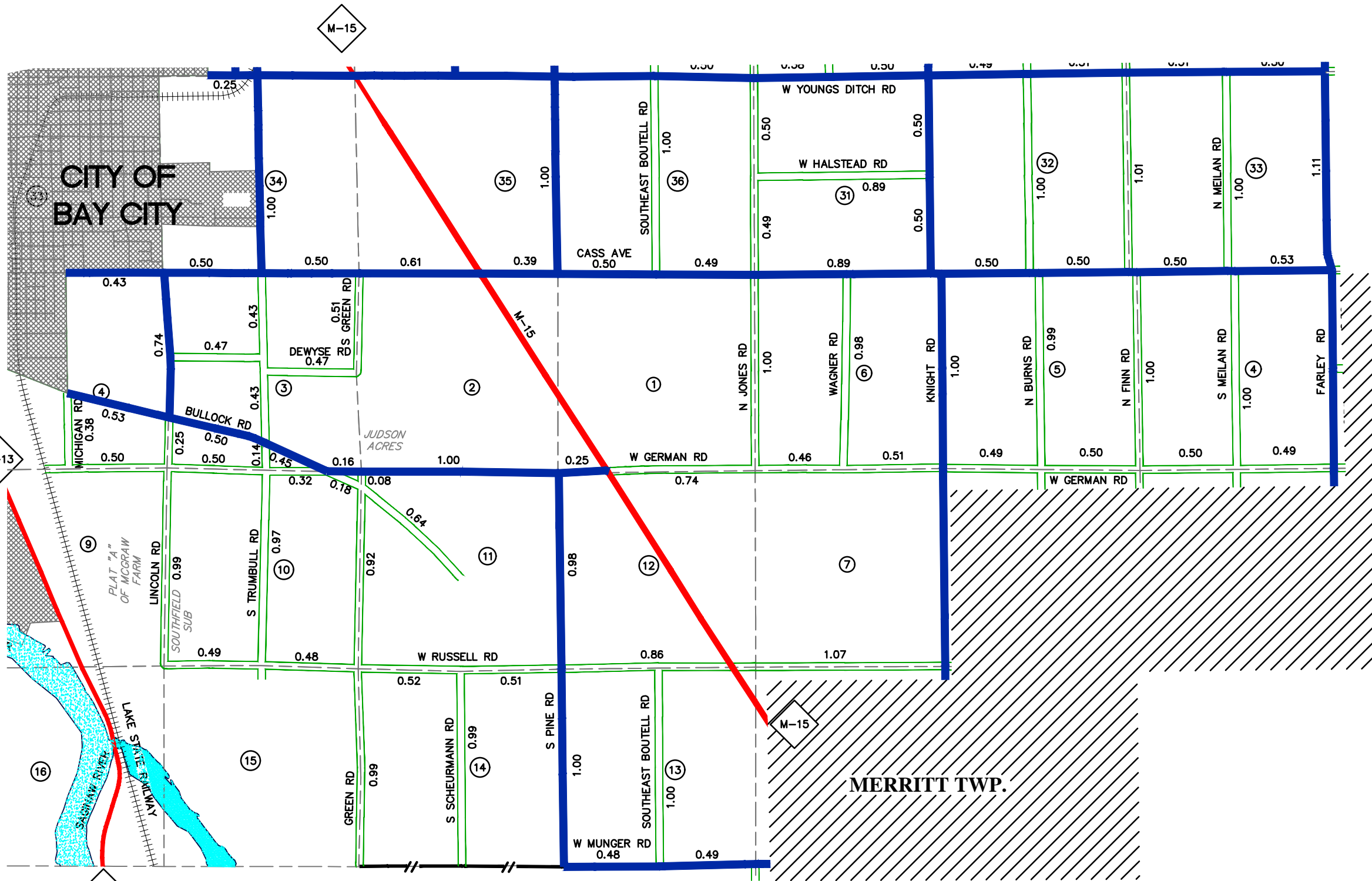


SCALE: 1" = 3000'



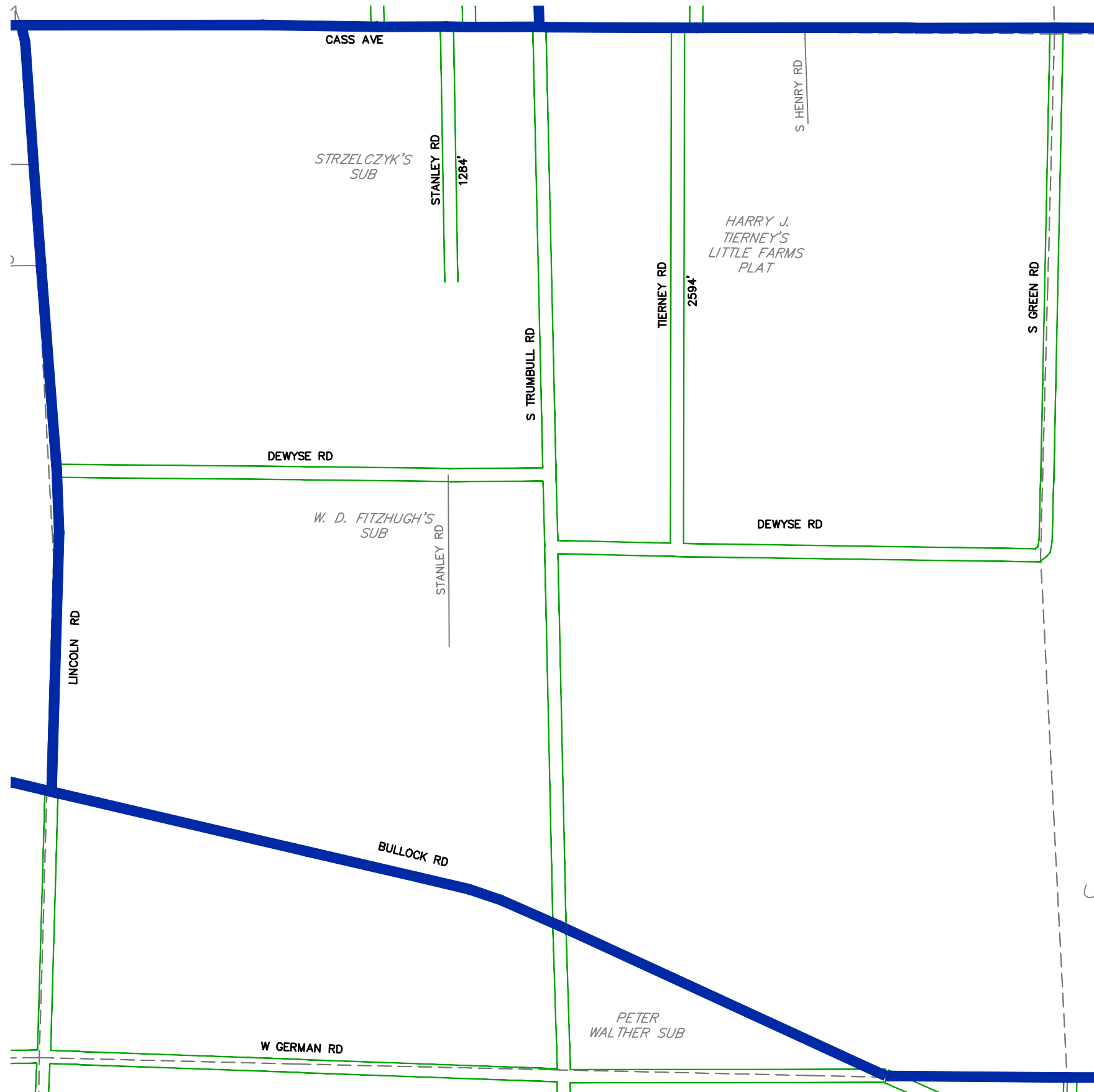
REVISED BY: CLW

DATE: 05/05/14



PORTSMOUTH TOWNSHIP

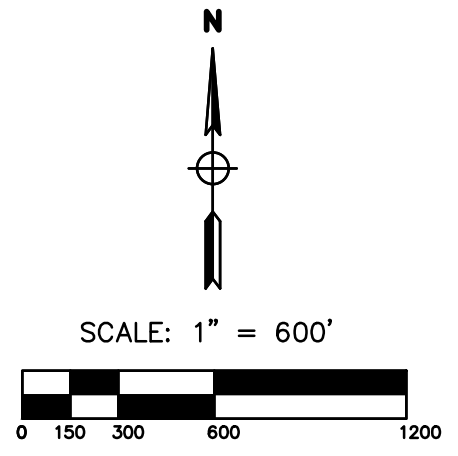
T.13-14 N. - R.05-06 E.
BAY COUNTY



LEGEND

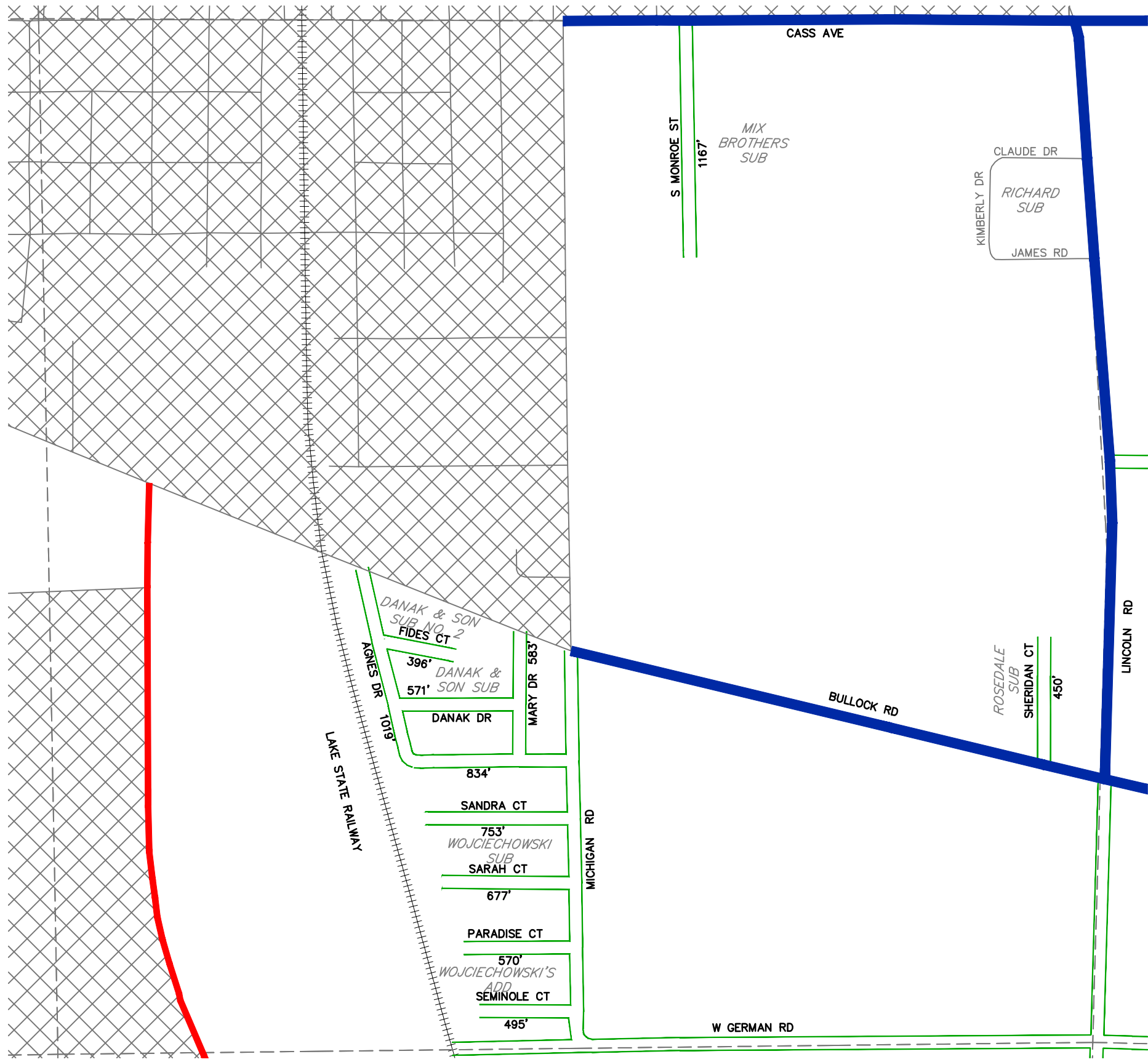
- - - - - SECTION LINES
- ==== ADJACENT COUNTY
- _____ CITY, VILLAGE OR PRIVATE STREET
- _____ URBAN LIMITS
- ==== COUNTY PRIMARY ROADS
- ==== COUNTY LOCAL ROADS
- ==== STATE TRUNK LINE
- ++++ RAILROAD TRACKS
- XXXX CITY OR VILLAGE LIMITS

TOTAL FEET 3,878 = 0.73 MILES



REVISED BY: CLW
 DATE: 05/05/14

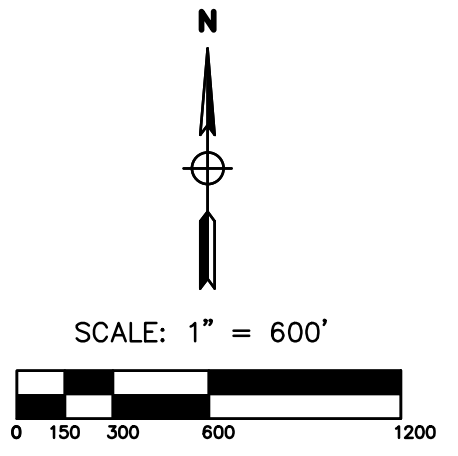
PORTSMOUTH TOWNSHIP
 SECTION 3
 T.13 N. - R.05 E.
 BAY COUNTY



LEGEND

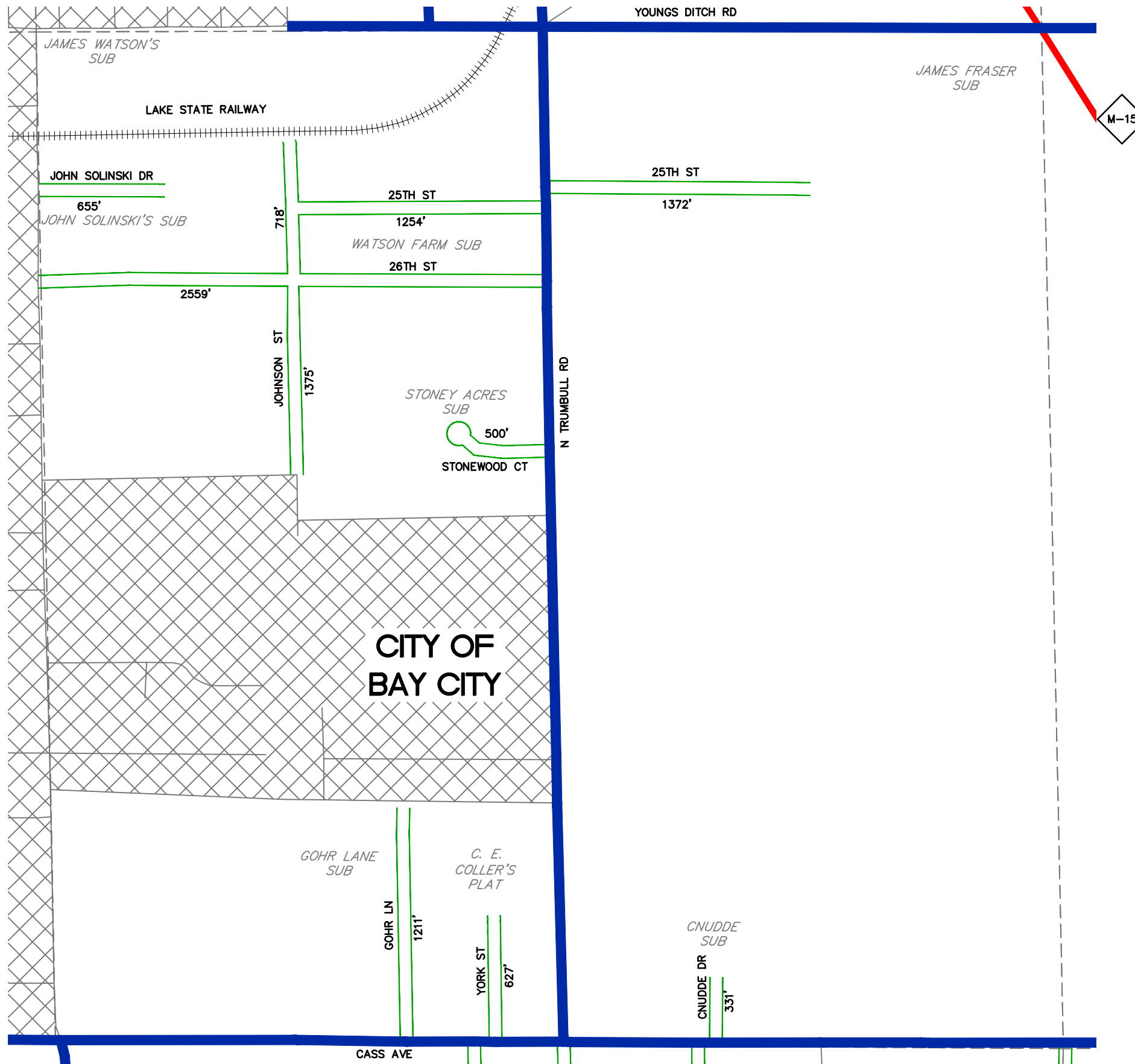
- SECTION LINES
- ADJACENT COUNTY
- CITY, VILLAGE OR PRIVATE STREET
- URBAN LIMITS
- COUNTY PRIMARY ROADS
- COUNTY LOCAL ROADS
- STATE TRUNK LINE
- RAILROAD TRACKS
- CITY OR VILLAGE LIMITS

TOTAL FEET 7,515 = 1.42 MILES



REVISED BY: CLW
 DATE: 05/05/14

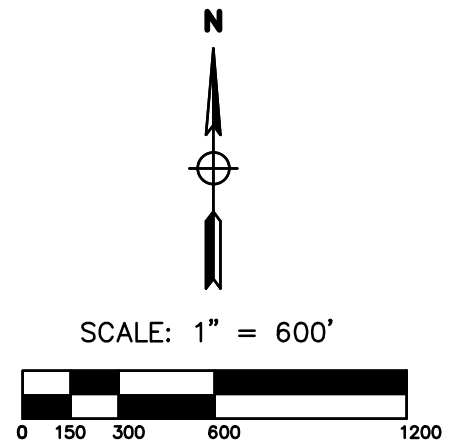
PORTSMOUTH TOWNSHIP
 SECTION 4
 T.13 N. - R.05 E.
 BAY COUNTY



LEGEND

- SECTION LINES
- ADJACENT COUNTY
- CITY, VILLAGE OR PRIVATE STREET
- URBAN LIMITS
- COUNTY PRIMARY ROADS
- COUNTY LOCAL ROADS
- STATE TRUNK LINE
- RAILROAD TRACKS
- CITY OR VILLAGE LIMITS

TOTAL FEET 10,602 = 2.01 MILES

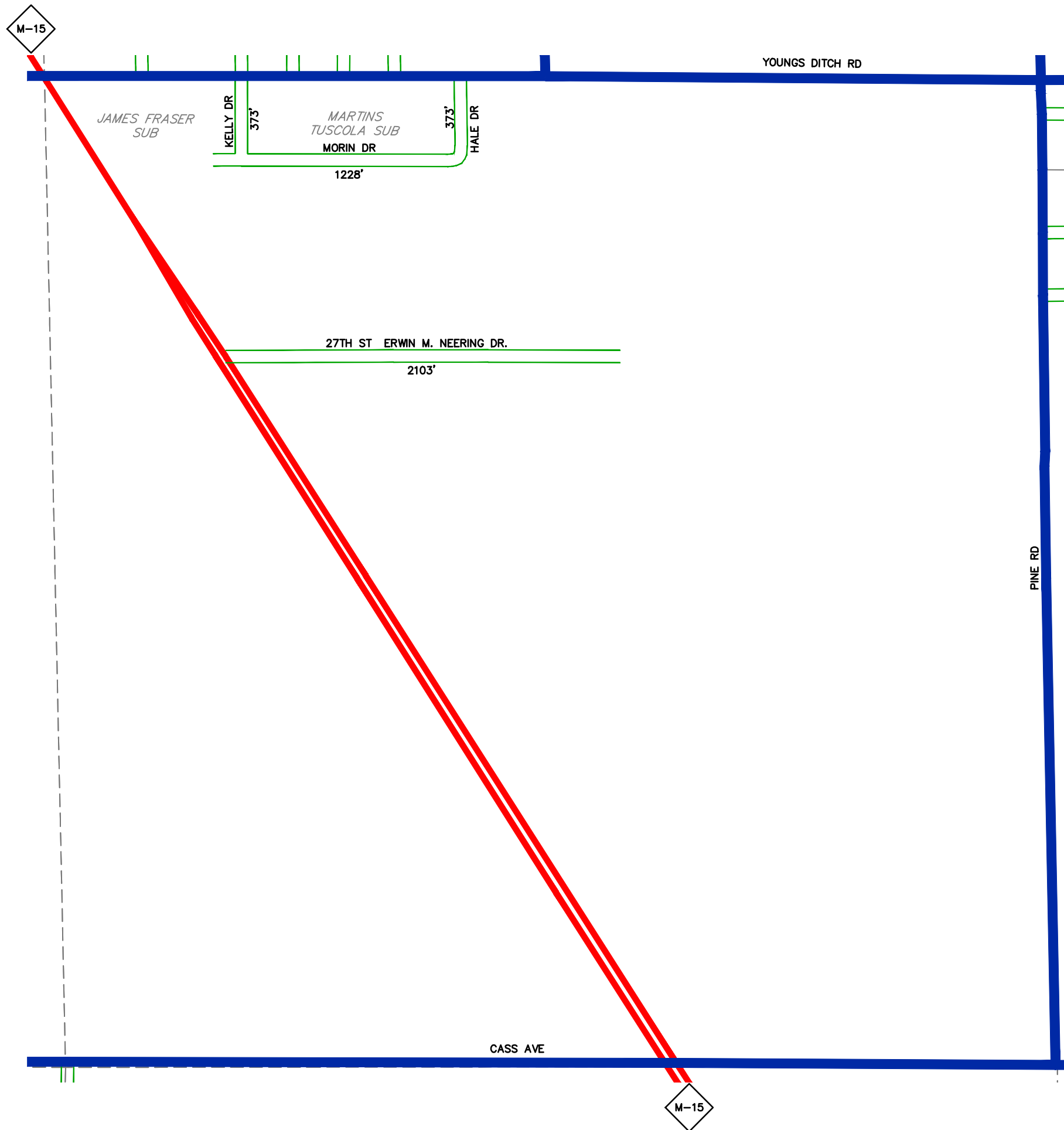


REVISED BY: CLW

DATE: 05/05/14

PORTSMOUTH TOWNSHIP

SECTION 34
 T.14 N. - R.05 E.
 BAY COUNTY



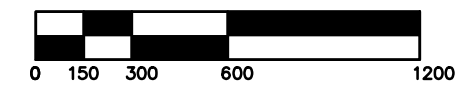
LEGEND

- SECTION LINES
- ADJACENT COUNTY
- CITY, VILLAGE OR PRIVATE STREET
- URBAN LIMITS
- COUNTY PRIMARY ROADS
- COUNTY LOCAL ROADS
- STATE TRUNK LINE
- RAILROAD TRACKS
- CITY OR VILLAGE LIMITS

TOTAL FEET 4,077 = 0.77 MILES



SCALE: 1" = 600'

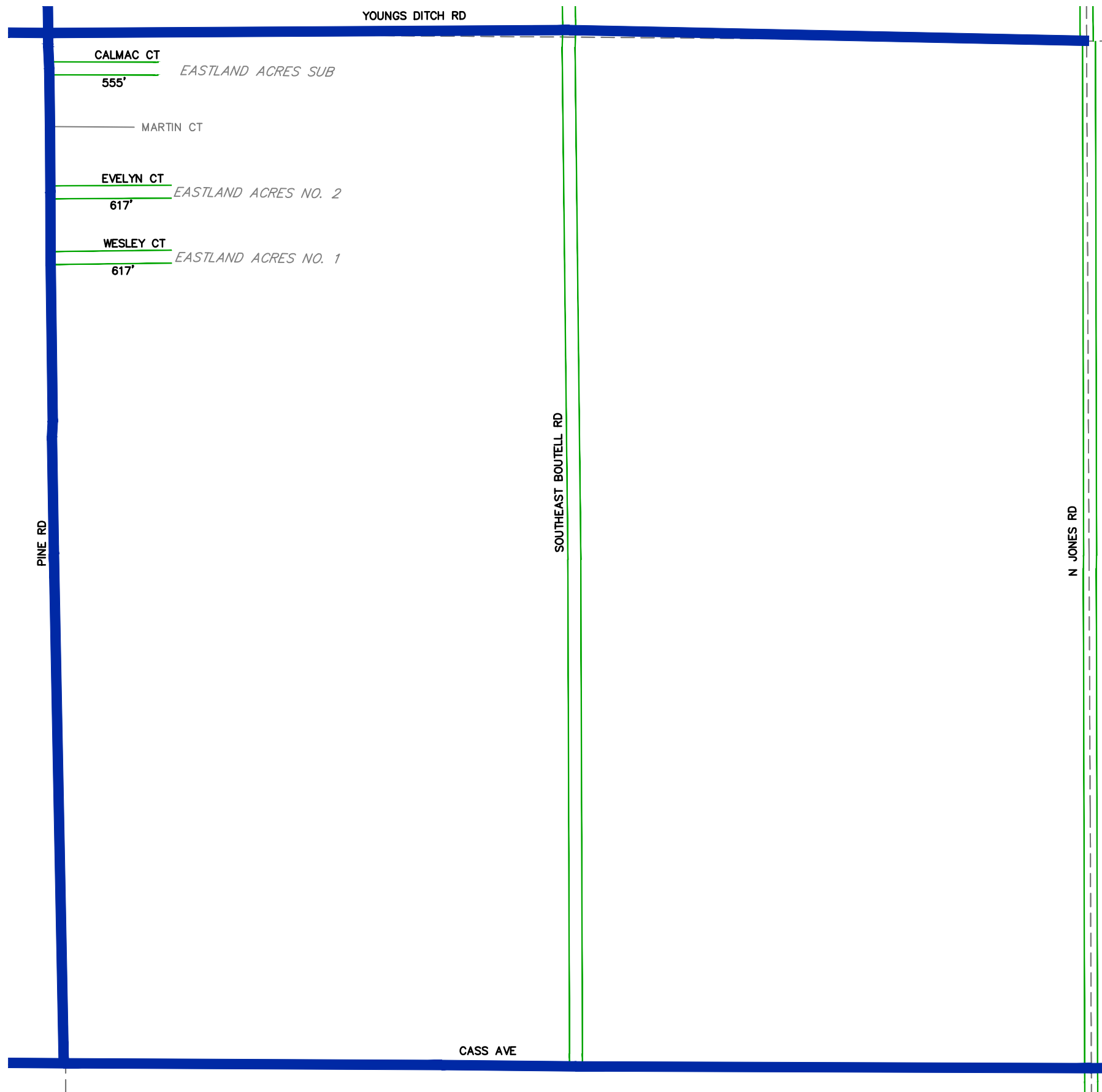


REVISED BY: CLW

DATE: 05/05/14

PORTSMOUTH TOWNSHIP

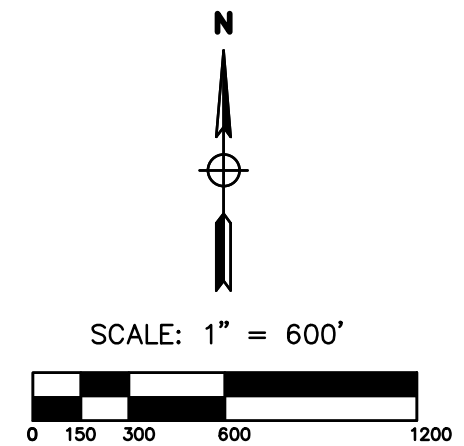
SECTION 35
T.14 N. - R.05 E.
BAY COUNTY



LEGEND

- SECTION LINES
- ADJACENT COUNTY
- CITY, VILLAGE OR PRIVATE STREET
- URBAN LIMITS
- COUNTY PRIMARY ROADS
- COUNTY LOCAL ROADS
- STATE TRUNK LINE
- RAILROAD TRACKS
- CITY OR VILLAGE LIMITS

TOTAL FEET 1,789 = 0.34 MILES



REVISED BY: CLW

DATE: 05/05/14

PORTSMOUTH TOWNSHIP

SECTION 36
T.14 N. - R.05 E.
BAY COUNTY