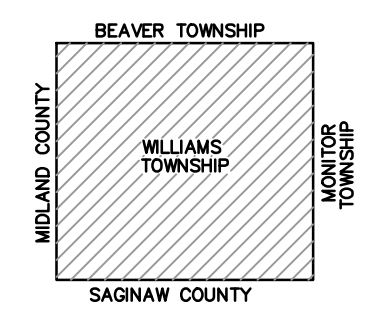


LOCATION MAP

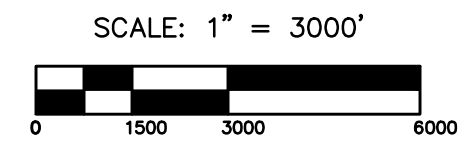


LEGEND

- ADJACENT COUNTY
- CITY, VILLAGE OR PRIVATE STREET
- URBAN LIMITS
- COUNTY PRIMARY ROADS
- COUNTY LOCAL ROADS
- STATE TRUNK LINE
- RAILROADS
- CITY OR VILLAGE LIMITS
- SECTION LINES

PRIMARY ROAD SYSTEM 34.92 MILES

LOCAL ROAD SYSTEM 30.31 MILES

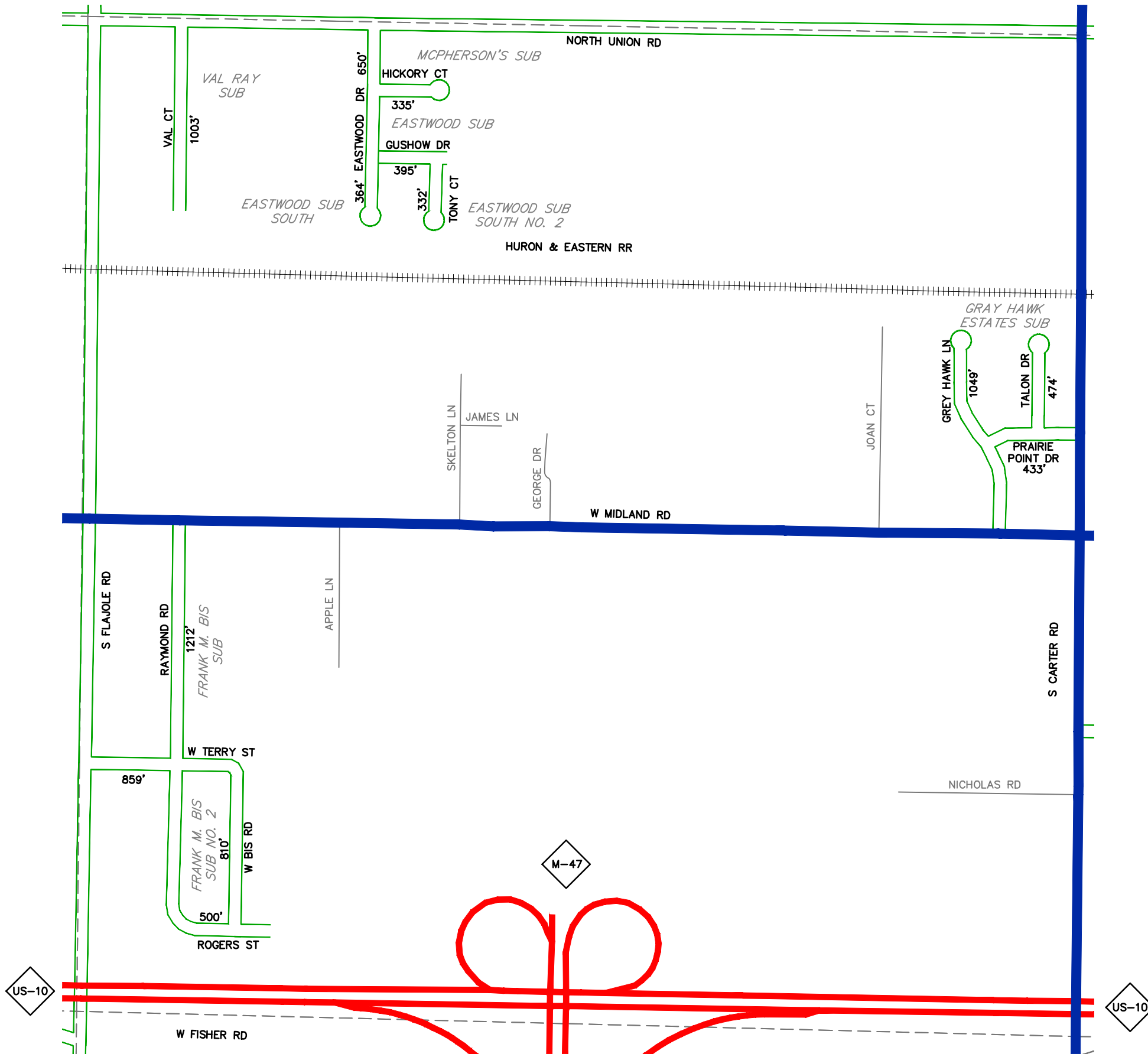


REVISED BY: EJD

DATE: 02/20/17

WILLIAMS TOWNSHIP

T.14 N. - R.03 E.  
BAY COUNTY



**LEGEND**

- - - - - SECTION LINES
- ==== ADJACENT COUNTY
- \_\_\_\_\_ CITY, VILLAGE OR PRIVATE STREET
- \_\_\_\_\_ URBAN LIMITS
- ==== COUNTY PRIMARY ROADS
- ==== COUNTY LOCAL ROADS
- ==== STATE TRUNK LINE
- ++++ RAILROAD TRACKS
- XXXXX CITY OR VILLAGE LIMITS

TOTAL FEET 9,116 = 1.73 MILES



SCALE: 1" = 600'



REVISED BY: CLW

DATE: 05/05/14

**WILLIAMS TOWNSHIP**

SECTION 20  
T.14 N. - R.03 E.  
BAY COUNTY

**LEGEND**

- SECTION LINES
- ADJACENT COUNTY
- CITY, VILLAGE OR PRIVATE STREET
- URBAN LIMITS
- COUNTY PRIMARY ROADS
- COUNTY LOCAL ROADS
- STATE TRUNK LINE
- RAILROAD TRACKS
- CITY OR VILLAGE LIMITS

TOTAL FEET 6,326 = 1.20 MILES



SCALE: 1" = 600'

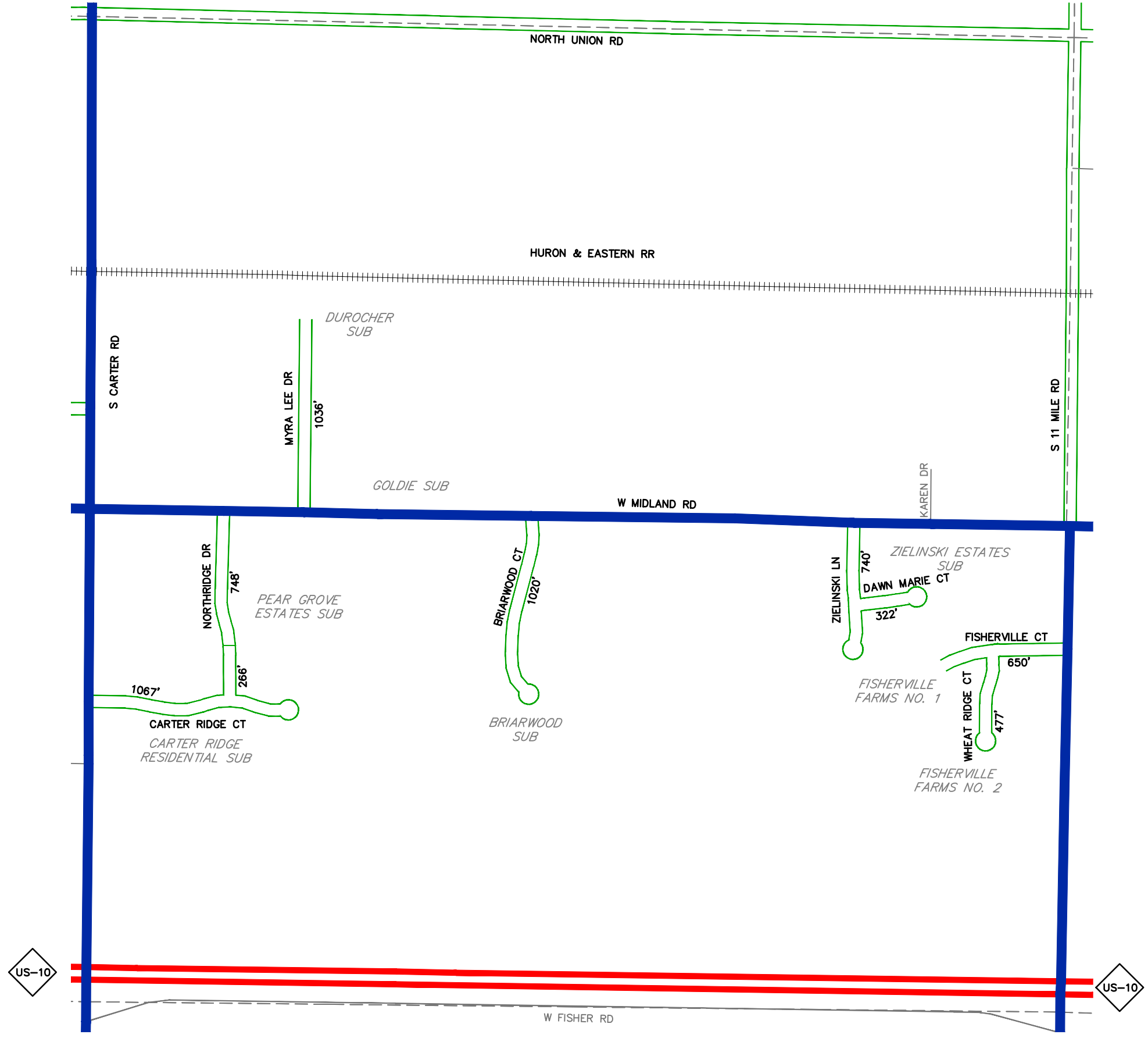


REVISED BY: CLW

DATE: 05/05/14

**WILLIAMS TOWNSHIP**

SECTION 21  
T.14 N. - R.03 E.  
BAY COUNTY



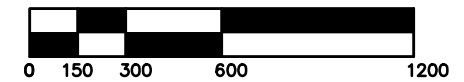
**LEGEND**

- SECTION LINES
- ADJACENT COUNTY
- CITY, VILLAGE OR PRIVATE STREET
- URBAN LIMITS
- COUNTY PRIMARY ROADS
- COUNTY LOCAL ROADS
- STATE TRUNK LINE
- RAILROAD TRACKS
- CITY OR VILLAGE LIMITS

TOTAL FEET 10,284 = 1.95 MILES



SCALE: 1" = 600'

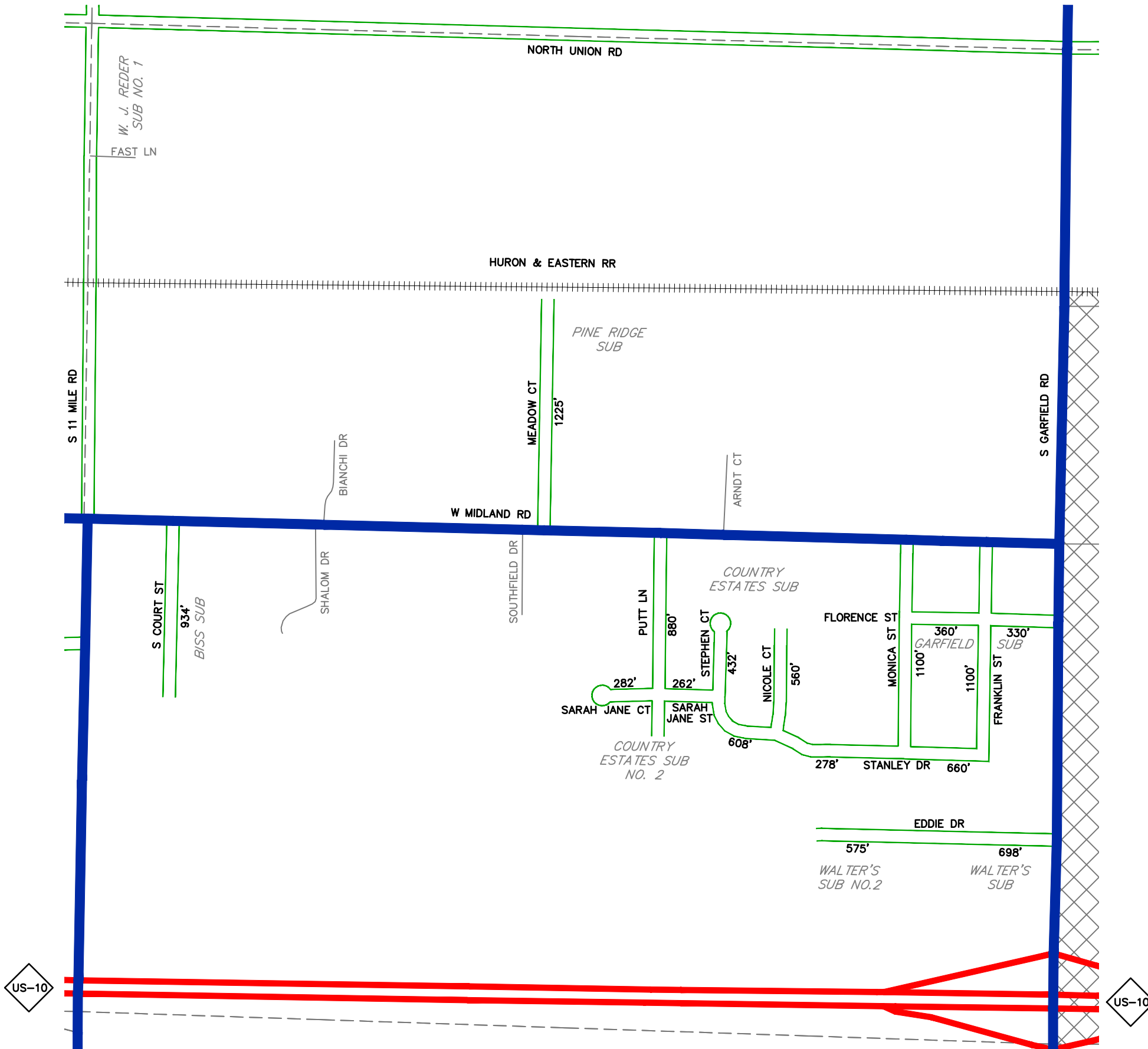


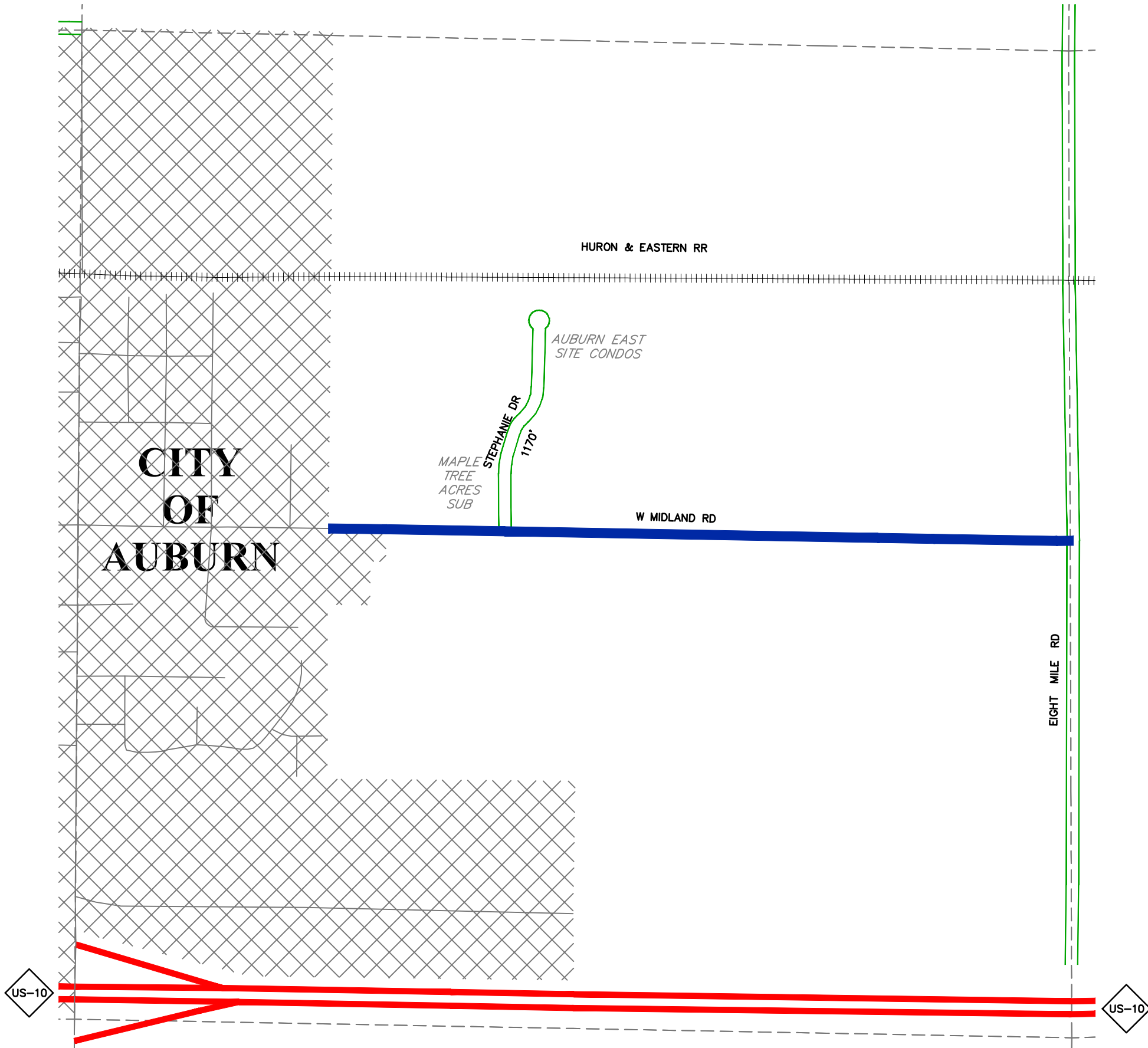
REVISED BY: CLW

DATE: 05/05/14

**WILLIAMS TOWNSHIP**

SECTION 22  
T.14 N. - R.03 E.  
BAY COUNTY

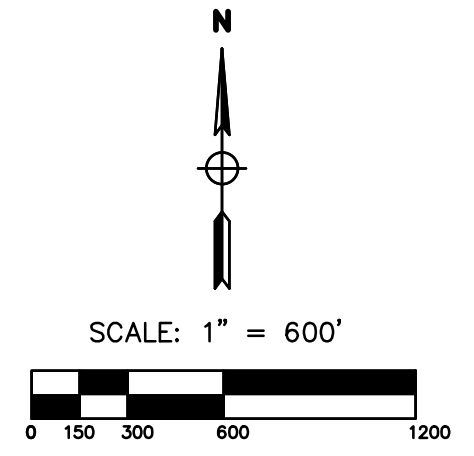




**LEGEND**

- SECTION LINES
- ADJACENT COUNTY
- CITY, VILLAGE OR PRIVATE STREET
- URBAN LIMITS
- COUNTY PRIMARY ROADS
- COUNTY LOCAL ROADS
- STATE TRUNK LINE
- RAILROAD TRACKS
- CITY OR VILLAGE LIMITS

TOTAL FEET 1,170 = 0.22 MILES



REVISED BY: CLW  
 DATE: 05/05/14

WILLIAMS TOWNSHIP  
 SECTION 24  
 T.14 N. - R.03 E.  
 BAY COUNTY